

**Canon**

CANON SOLUTIONS AMERICA

# ImagePRESS C10010VP / C9010VP

## COLOR PRODUCTION DIGITAL PRESSES



 CANON SEE IMPOSSIBLE

## imagePRESS C10010VP / C9010VP

# ENGINEERED FOR YOUR DEMANDING PRODUCTION ENVIRONMENT

The imagePRESS C10010VP Series prides itself on offering a range of distinctive and vital technologies that help drive productivity, versatility, and high image quality. And when it comes to your daily workload, you won't be sacrificing one crucial technology to get the most out of another. From the *R-VCSEL Laser* and *Active Registration System* to the *Dual Fixing Technology* and *In-Line Spectrophotometric Sensors*, this digital color press is equipped with the features and technologies to help you make an impact for both your current and future customers.



imagePRESS C10010VP shown with optional accessories.



### Outstanding Productivity

- *Dual Fixing Technology* helps maintain high productivity even on complex jobs.
- *Ultrasonic Multisheet Detection* and automatic sheet purging to an escape tray helps keep the press running.<sup>1</sup>
- Wide range of productive, in-line feeding and finishing options for white-paper-in, and finished-product-out.
- Up to eight different paper sources<sup>2</sup> with an 11,000-sheet paper feed capacity<sup>3</sup> enables long, unattended print jobs.

### Amazing Quality

- *In-Line Spectrophotometric Sensors* provide automatic color calibration, media profiling,<sup>2</sup> and profile verification.<sup>2</sup>
- *Multi D.A.T.* helps to maintain consistent color across long runs automatically.
- The flexible *Advanced Image Transfer Belt* and *Simple Transfer Adjustment* combine to help produce brilliant solids.
- The *R-VCSEL Laser* helps create offset-like quality with 2400 x 2400 dpi print resolution.

### Brilliant Versatility

- Supports stocks up to 150 lb. Cover and various specialty medias including synthetics.
- Diversify your application offerings by printing on stocks up to 51.2" in length.<sup>2</sup>
- Generate precise and consistent front-to-back registration with the *Active Registration System*.
- A choice of powerful, digital front-ends, including Canon's *PRISMAsync Print Server* and Fiery powered *imagePRESS Servers*, help deliver high performance.

<sup>1</sup> POD Deck-D1 required.

<sup>2</sup> Optional accessories required.

<sup>3</sup> Capacity based on 20 lb. Bond.

## DECADES OF SUCCESS

No matter the size or focus of your business, remaining competitive and providing additional capabilities are essential for your continued success. When selecting a technology partner, Canon's extensive imaging experience can help you to increase productivity while producing vibrant and vivid images on a wide range of stocks.



# KEEP YOUR PRESS RUNNING



## BUILT TO PERFORM

As print providers know, there's more to productivity than mere speed. The entire press must integrate multiple technologies that are designed to deliver reliable performance. It's this integration that helps differentiate the imagePRESS C10010VP Series in the market and makes it a high-productivity performer for production print providers.

## MINIMIZE DOWNTIME

Keeping the press running and producing jobs is a top priority, even when your operators are occupied with numerous responsibilities. The *Vacuum Feed* and *Air Separation* help to ensure your stocks are reliably fed into the press. The *Ultrasonic Multi Sheet Detection* automatically diverts these jam-prone sheets to a top escape tray, without stopping the press or requiring operator attention.<sup>4</sup>

To help minimize service calls and increase productivity, the imagePRESS C10010VP Series is equipped with numerous operator-replaceable parts. Trained operators can perform basic maintenance and image adjustments, promoting maximum uptime and less unplanned maintenance.

## COMPLEX JOBS ARE NO PROBLEM

The imagePRESS C10010VP Series delivers superb throughput without having to sacrifice image quality. Thanks to the distinct *Dual Fixing Technology*, jobs that require coated and heavier weight stocks, including complex mixed weight jobs, can still run at high speeds. This helps operators with their tight deadlines and to get more out the door.

## TIGHT AND CONSISTENT REGISTRATION

Registration plays a critical role in print quality. It can also impact productivity if operators need to spend time making adjustments or reprinting jobs due to related issues. The imagePRESS C10010VP Series' *Active Registration System* mimics a sheet-fed press by utilizing a steel side plate to help correct any potential snags with image timing, skewing, or positioning. When fine adjustments are required, operators can control individual corners for each media. Together, these features provide tight and consistent registration that helps produce "first-time-right" output and reduced misprints.

# MAKE A STRONG IMPRESSION

## SET YOURSELF APART

Expectations are high in today's market and the imagePRESS C10010VP Series is engineered to consistently help you produce detailed and crisp text and fine lines, full solids, and vibrant color—all with minimal operator involvement.

## CONSISTENT AND STABLE COLOR

Built into the press is an assortment of technologies that are designed to help you produce brilliant color and keep it stable throughout your production runs. While the *In-Line Spectrophotometric Sensors* bring automation to color calibration, media profiling,<sup>5</sup> and verification<sup>5</sup> processes, *Multi D.A.T.* takes over during production by automatically measuring a range of highlight-to-shadow density patches between every sheet for real-time color correction.

## HIGHER MARGIN WORK

Printing on heavier, larger, and specialty stocks can open doors to new applications for your clients with the ability to produce high-quality output on a wide variety of stocks. The imagePRESS C10010VP Series supports stocks up to 150 lb. Cover, including specialty and long sheets. Expand your portfolio with the ability to auto-duplex stocks up to 30" and work-and-turn on stocks up to 51.2" in length.<sup>7</sup>

## OFFSET-LIKE QUALITY

Not all stocks are created equal, and it can be a time-consuming and challenging task to produce acceptable output. The flexible *Advanced Image Transfer Belt* and intuitive *Simple Transfer Adjustment* help to minimize mottling, especially on the lucrative specialty and textured stocks, thereby helping to produce the same high-quality output you'd expect on standard stocks. With the *Translucent CV Toner*, the surface properties of your media can shine through for a consistent, offset-like output.

## CLEAN, CRISP, AND SMOOTH HALFTONES

Quality is more than just vibrant color, as it extends to the clarity and detail of halftone images, vector artwork, and text. The finer<sup>6</sup> wavelength of Canon's *Red-VCSEL Laser* is an imperative piece, helping to keep curves smooth, raster images clean, and fonts looking crisp. And while the first impression on the drum always looks strong, the unique *Multi Exposure Technology* hits every dot twice, helping to ensure that, as the drum ages, the quality and clarity remain at a high level.

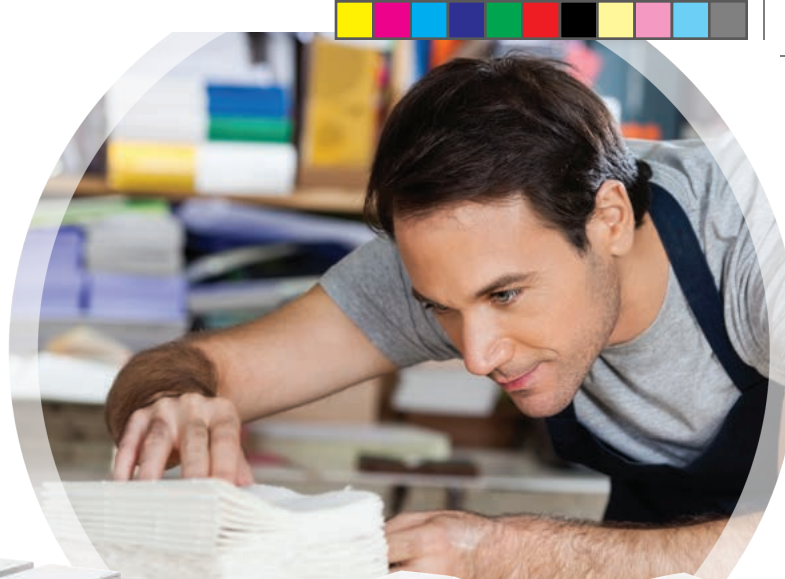


<sup>5</sup> Optional Color Profiler Suite required for Fiery-based imagePRESS Server workflows.

<sup>6</sup> Compared to traditional infrared imaging lasers.

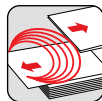
<sup>7</sup> Optional accessories required.

# A SYNERGY OF INNOVATIVE TECHNOLOGIES THAT ALLOWS YOU TO STAND OUT



## VACUUM FEEDING AND AIR SEPARATION<sup>8</sup>

Helps provide reliable feeding of heavier and coated paper, which aids in reducing potential misfeeds when printing.



## ULTRASONIC MULTISHEET DETECTION<sup>9</sup>

Rather than measure paper thickness, the POD Deck utilizes an ultrasonic sensor. This detects air between sheets and, when detected, feeds them to the top escape tray to help maintain throughput or stop the press.



## SEMI-AUTOMATIC REGISTRATION

Simply scanning a test print chart on standard or long-sheet stocks helps to quickly make fine adjustments for proper image placement.



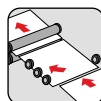
## R-VCSEL LASER

The fine image wavelength of the 32-beam R-VCSEL laser delivers a 2400 x 2400 dpi print resolution, helping to produce crisp, detailed output.



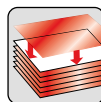
## MULTI-EXPOSURE TECHNOLOGY

The R-VCSEL laser writes every dot on the drum twice when creating images. This helps provide consistent and high image quality across long runs.



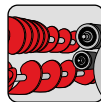
## ACTIVE REGISTRATION SYSTEM

The combination of a steel side guide, front edge detection, and multiple image timing sensors helps to produce tight and consistent front-to-back registration.



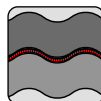
## TRANSLUCENT CV TONER

The smooth, translucent particles and a low melting point contribute to producing consistent, vibrant images on a wide variety of media.



## TWIN SLEEVE DEVELOPER

Uses multiple grooved rollers to apply toner to the imaging drum, which helps to produce consistent and full solids across a sheet.



## ADVANCED IMAGE TRANSFER BELT

The durable and flexible surface helps to press the CV Toner onto smooth and textured surfaces at full-rated speed for minimized mottling and brilliant output.

<sup>8</sup> Not available on the POD Deck Lite or POD Deck Lite XL.

<sup>9</sup> POD Deck-DI required.



imagePRESS C10010VP  
shown with optional accessories.



**SECONDARY TRANSFER BELT**

Helps stabilize the paper when transferring the image to the media, which helps to maintain tight registration and limit lead and trail-edge fading.



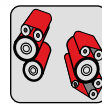
**INTERNAL TEMPERATURE CONTROL**

Internal airflow is blown and temperatures are monitored across each developer unit to help keep the environments stable, thereby producing high image quality and consistent color.



**MULTI D.A.T.**

Automatic, real-time color correction between every sheet helps deliver direct feedback to the print engine for color consistency throughout long print runs.



**DUAL FIXING**

Two separate fixing stations allow the press to achieve high output speeds and quality on heavy and coated substrates as well as mixed-media jobs.



**AIR KNIFE**

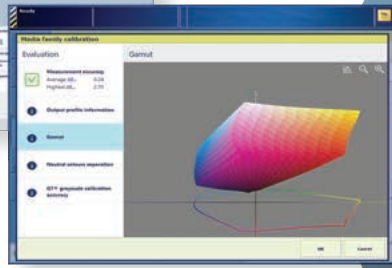
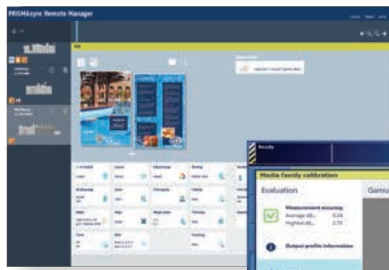
A built-in air compressor powers a stream of air to help keep lightweight substrates separated from the fixing roller.



**IN-LINE SPECTROPHOTOMETRIC SENSORS**

From press linearization to media profile creation and verification,<sup>10</sup> patches are automatically measured with internal color sensors. They help to produce predictable and vibrant color—all with minimal operator intervention and, when required, to industry specifications.

<sup>10</sup> Optional Color Profiler Suite required for Fiery-based imagePRESS Server workflows.



# CUTTING-EDGE PRINT SERVER WITH INTUITIVE AND POWERFUL TOOLS



## PRISMAsync PRINT SERVERS

### EMPOWER YOUR TEAM

Canon's PRISMAsync Print Server can not only help boost production capacity, it can also help to lower costs. It delivers the high-performance, deadline-driven printing that can help you grow your business and drive future success.

### PREDICTABLE PRODUCTION CONTROL

Stay in control of your daily workload with up to eight hours of plan-ahead production with *Job Scheduler*. It will intuitively display time to completion of jobs and upcoming interventions for media, toner, or staples.

### INNOVATIVE COLOR CORRECTION

The PRISMAsync Print Server incorporates an in-RIP G7® calibration method. Without a need for third-party software or complex procedures, operators can easily calibrate and profile an imagePRESS C10010VP Series digital press to achieve a near-neutral print condition.<sup>11</sup> With additional automation provided by the *Inline Spectrophotometric Sensors* (ILS), profile creation can become even easier. The same ILS sensors can be used to bring automation to verification of your customized profiles.

<sup>11</sup> For requirements regarding G7 conformation, please consult a Canon Solutions America sales representative.

<sup>12</sup> The remote workstation must be connected to the same network as the digital press. An HTML 5-compatible web browser with JavaScript and WebSocket support is required.

<sup>13</sup> A Google® or Microsoft® account is required to gain access to PRISMAlytics. Setup and data transfer outside your network are required.

### CLEAR COMMUNICATION

With a customized and intuitively named media catalog, locating and assigning paper stocks can be an easy process. When jobs are submitted, operators can quickly view the desired stocks and know which media is required, if a calibration is recommended, and the quantity for each production job.

### MANAGE AND MONITOR PRODUCTION REMOTELY

PRISMAsync *Remote Manager* is a multipress scheduler and management console that provides great control over your fleet of compatible PRISMAsync-driven digital presses. This web-based tool helps you keep your presses running as continuously as possible, with work properly prioritized. Easily upload jobs, edit job properties, print and manipulate queues, and monitor your fleet—all from a remote workstation.<sup>12</sup>

### IMPROVE PRODUCTION WITH FACT-BASED DATA

*PRISMAlytics Dashboard*<sup>13</sup> is a cloud-based service that records press data and makes it easy to access and interpret. The dashboard displays usage-, production-, and consumption-related information. In an effort to help reduce costs and optimize productivity, PRISMAlytics Dashboard can automatically collect production data and transform it into business-critical information.



# EFFICIENTLY MANAGE PREPRESS AND COLOR

## imagePRESS SERVER B7000 V2/B6000 V2

### BE MORE PRODUCTIVE

Powered on the Fiery FS400 Pro system software, the imagePRESS Servers B7000 V2/B6000 V2 bring the processing power required for your graphic-intensive and complex jobs. They provide an intuitive and integrated operator experience, exceptional color tools, and automation from prepress to finishing. Combining the features of the Fiery-powered imagePRESS Server with the plethora of technologies inside the imagePRESS C10010VP Series can help give you the edge to not only produce jaw-dropping output, but also help bring efficiency to your demanding production schedule.

### INTUITIVE OPERATION

Job lengths are decreasing yet quantities are increasing. This means processes like setting up a simple and automated method of correcting, applying job parameters, and sending files to your controller efficiently are becoming crucial. Hot Folders and Virtual Printers help to automate the time-consuming and repetitive tasks of applying job properties and getting your jobs to the desired location quickly. When activated, Fiery JobExpert analyzes incoming PDF files and dynamically chooses the optimal print settings to help achieve the highest quality while maximizing production time.

### POWERFUL COLOR TOOLS

From the Fiery ColorWise color management technology to Spot On and Fiery Image Enhance Visual Editor, the imagePRESS Server is equipped with a host of color tools to help you preserve your customers' messages and branding. Customized color curves can be defined, applied, and saved at the individual page level and over a range of pages. And, in G7-certified environments, the imagePRESS Servers can help operators match gray-balance targets.<sup>14</sup>

### SOPHISTICATED PAPER MANAGEMENT

Media Librarian is Canon's paper management application, designed to help improve productivity on the imagePRESS C10010VP Series. Operators can create, edit, and organize their paper stocks from a single, intuitive interface.



<sup>14</sup> Optional accessories required.

# WHITE PAPER IN, FINISHED PRODUCT OUT



imagePRESS C10010VP  
shown with optional accessories.

## FINISHING OPTIONS

From book covers to manuals to posters to fully-bound books and manuals, the Canon imagePRESS C10010VP Series offers a vast selection of accessories that can help you to delight customers with superb print quality and professionally finished products.



### Document Insertion Unit

This module enables insertion of slip sheets or preprinted covers for booklets and complex jobs.



### Professional Punching and Creasing

The numerous die patterns offered for in-line hole punching (including double punching) and creasing help minimize toner cracking on the spines of saddle-stitched booklets.



### Perfect Binding

Using hot glue, this module binds covers to book blocks of up to 400 pages<sup>15</sup> and can trim on all three sides for full-bleed books or manuals.



### High-Capacity Stacking

Realize maximum productivity with unload-while-run capability, helping to provide uninterrupted printing with stacking of up to 6,000 sheets.<sup>15</sup>



### Ring Binding

Utilize the GBC eWire Pro or Max Ring Binder to help automate the time-consuming process of wire binding manuals, booklets, and reports.



### Paper Folding

Offer promotional pamphlets, brochures, and more with the ability to produce Z-fold, C-fold, accordion fold, and double-parallel fold documents.



### Staple and Saddle Finishing

Corner staple up to 100 sheets<sup>15</sup> in stacks of 5,000 sheets<sup>15</sup> or saddle-stitch up to 100-page booklets<sup>15</sup> in paper sizes up to 13" x 19.2". A side jogger helps keep media in straight or offset stacks.



### Booklet Trimming

Help maintain high productivity with a large-capacity trim waste bin and on-the-fly waste removal for continuous production. These modules can combine with the Booklet Finisher to help operators produce professional, full-bleed booklets in-line.



### Professional Booklet-Makers

Deliver professional-looking, lay-flat booklets with speed and simplicity using the SDD BLM300C for booklets up to 120 pages<sup>15</sup> or the Plockmatic BLM50/35 for up to 200-page<sup>15</sup> professional, square-folded, saddle-stitched booklets.



### Finisher Bridge

Connect the SDD or Plockmatic professional booklet-makers to the Finisher-ANI, without having to sacrifice corner stapling or 2-/3-hole punching.

## FEEDING OPTIONS



### POD Deck

Equipped with vacuum feeding and air separation, each drawer supports up to 13" x 19.2" and 150 lb. Cover. Up to two PODs can be attached, increasing the capacity to 10,000 sheets.<sup>15</sup>



### BDT VX 370-790 Long-Sheet Feeder

Robust feeder equipped with Tornado suction feeding and air-separation. Contains a single cart that supports up to 13" x 30" and 150 lb. Cover. The 5,000-sheet capacity<sup>15</sup> allows jobs to run with minimal interruption.



### POD Deck Lite

Designed for locations with space restrictions, this deck's 3,500-sheet<sup>15</sup> capacity with air-assist and air-separation supports paper sizes up to 13" x 19.2".



### POD Deck Lite XL

In addition to the capabilities of the POD Deck Lite, this feeding option holds up to 1,000 sheets<sup>15</sup> of media up to 13" x 30" in size—optimal for six-panel brochures, book covers, and posters.

# EXPAND YOUR OPPORTUNITIES

## READY FOR GROWTH

The state-of-the-art imagePRESS C10010VP Series offers end-to-end solutions and outstanding day-to-day reliability that can help your operation achieve your desired success.

Produce a broad range of print products, including trifold brochures, saddle-stitched booklets, direct mail, business cards, presentation and training materials, flyers, and posters. Diversify your offerings with the ability to print on attention-grabbing stocks, including synthetic medias, textured stocks, and banner sheets in a range of sizes.

With a choice of advanced print controllers and scalable, productive feeding and finishing options, these presses can be configured to help you accomplish your goals.

## TEAMING WITH CANON

When you select the imagePRESS C10010VP Series of color digital presses you're also choosing Canon. With over 80 years' experience in the design and development of innovative imaging technology, Canon seizes every opportunity to add to this experience, constantly improving its technologies to stay at the forefront of innovation.

Canon understands that each business and print room is unique, with its own needs. Offering both expertise and award-winning support, your Canon Solutions America sales representative can bring new ideas and applications that can help you inspire your customers and help improve the productivity of your business.

**LEARN MORE**

Visit  
[csa.canon.com](http://csa.canon.com)



# SPECIFICATIONS

## imagePRESS C10010VP

## imagePRESS C9010VP

<b>Print Speed</b> (Simplex/Duplex)	8.5" x 11"	Up to 100 ipm	Up to 90 ipm
	11" x 17"	Up to 56.2 ipm	Up to 50.6 ipm
	12" x 18"	Up to 53.5 ipm	Up to 48.1 ipm
	13" x 19"	Up to 51 ipm	Up to 45.9 ipm
	13" x 30"	Up to 28.3 ipm	Up to 25.5 ipm
<b>Scan Speed</b> <sup>17</sup> (Letter, 300 dpi)	BW	Up to 240 opm	Up to 240 opm
	Color	Up to 220 opm	Up to 220 opm
<b>Print Resolution</b>		2400 x 2400 dpi	2400 x 2400 dpi
<b>Paper Capacity</b> <sup>16</sup>	Standard	Up to 2,000 Sheets	Up to 2,000 Sheets
	Maximum <sup>17</sup>	Up to 11,000 Sheets	Up to 11,000 Sheets
<b>Paper Size</b>	Standard	7.2" x 7.2" to 13" x 19.2"	7.2" x 7.2" to 13" x 19.2"
	Optional	5.5" x 5.83" to 13" x 51.2"	5.5" x 5.83" to 13" x 51.2"
<b>Paper Weight</b>	Standard	16 lb. Bond to 150 lb. Cover	16 lb. Bond to 150 lb. Cover
	Optional	16 lb. Bond to 150 lb. Cover	16 lb. Bond to 150 lb. Cover
<b>Automatic Duplexing</b>	Media Size	7.2" x 7.2" to 13" x 30" <sup>17</sup>	7.2" x 7.2" to 13" x 30" <sup>17</sup>
	Media Weight	16 lb. Bond to 150 lb. Cover	16 lb. Bond to 150 lb. Cover
<b>Long Sheets</b> <sup>17</sup>	Media Size	Up to 13" x 51.2"	Up to 13" x 51.2"
	Media Weight	16 lb. Bond to 150 lb. Cover	16 lb. Bond to 150 lb. Cover

## OPTIONS

### Print Servers

- PRISMAsync Print Server
- imagePRESS Server B6000 V2
- imagePRESS Server B7000 V2

### Feeding Options

- POD Deck-D1
- Secondary POD Deck-D1
- POD Deck Lite-C1
- POD Deck Lite XL-A2
- Long Sheet Tray-D1
- BDT VX 370-790 Long Sheet Feeder

### Finishing Options

- Document Insertion Unit-N1
- Multifunction Professional Puncher-B1
- GBC eWire
- Perfect Binder-E1
- Perfect Binder Continuous Kit-A1
- High Capacity Stacker-H1
- HCS Long Sheet Tray-A1
- Paper Folding Unit-J1
- MAX Ring Binder MB-1000C
- Finisher-AN1
- Saddle Finisher-AN2
- DFD Adapter and Finisher Bridge-A1
- Puncher Unit-BS1
- Long Sheet Tray-C1
- Finisher Long Sheet Catch Tray-A1
- Booklet Trimmer-F1
- 2-Knife Trimmer & Conveyor
- Square Fold Booklet-Maker with Two-Knife Trimmer
- Square Fold Booklet-Maker
- SDD BLM300C Professional Booklet-Maker
- Plockmatic BLM35 Booklet-Maker

<sup>16</sup> Capacity based on 20 lb. Bond.

<sup>17</sup> Optional accessories required.

For more information,  
call 1.800.815.4000  
or visit [csa.canon.com](http://csa.canon.com)

**Canon**  
CANON SOLUTIONS AMERICA



Canon, imagePRESS, and the GENUINE logo are registered trademarks of Canon Inc. in the United States and may also be registered trademarks or trademarks in other countries. PRISMA is a registered trademark of Canon Production Printing Netherlands B.V. All other referenced product names and marks are trademarks of their respective owners. Some output may be simulated. Specifications and availability subject to change without notice. Not responsible for typographical errors.  
©2020 Canon U.S.A., Inc. All rights reserved.

Federal Law prohibits copying of certain documents. Violators may be subject to penalties. We suggest that you check with your own legal counsel. Canon U.S.A., Inc., Canon Solutions America, Inc., and Canon Canada, Inc. intend to cooperate with Law Enforcement Agencies in connection with claims on unauthorized copying.

CSA-20-0824-4916  
0820R2-C10010VP-PDF-IH



CANON  
**GENUINE**  
TONER, CARTRIDGE  
& PARTS