

# Designed for pure focus

## Océ PlotWave® 345/365



The easy way to stay focused and get great looking technical documents

Canon Mexicana S. de R.L. de C.V.  
Torre Altiva, Blvd. M. Ávila Camacho No. 138  
PB y pisos 15,16,17, Col. Lomas de Chapultepec,  
Del. Miguel Hidalgo, México D.F., C.P. 11000.  
ISO 9001:2000  
[www.canon.com.mx](http://www.canon.com.mx)

**Canon**

# Océ PlotWave 345/365

- **Make the most of your work day**
- **Easily get great results**
- **Count on secure and durable printing**
- **Be eco friendly**

As the world leader in wide format, technical document plotters, printers, copy and scan systems, Canon has set the market standard for productivity, instant operation, reliable performance and ease-of-use. More than 170,000 Océ PlotWave printers sold in less than 20 years and a long list of prestigious industry awards underscore the popularity of this brand.

Designed for pure focus, the new Océ PlotWave 345 and Océ PlotWave 365 printing systems offer technical users best levels of security, cost-effectiveness and simplicity. The perfect walk-up systems that make it easy for professionals to stay focused on their work and still get great looking, all weather proof technical documents. The right choice when you want to print faster, share faster and finish projects faster, while fully safeguarding your confidential information.

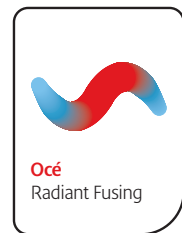


## Make the most of your work day

Wherever you are and whatever document you need, the Océ PlotWave 345/365 offer instant productivity to help you make the most of your work day. If you have access to a WiFi router in your network, you can use a smart phone or computer to retrieve technical files from a cloud or send a print request to your printer via Océ Publisher Mobile. Optionally you can use LDAP credentials to access your home folder directly from the Océ ClearConnect panel.



Save costly man hours and energy costs with our award-winning Océ Radiant Fusing technology. It goes from sleep mode to print in hand in just 40 seconds. Compared to a slow 2.5 minutes with conventional toner and inkjet printers, this can save you an hour a day and cut your energy costs in half. Save the time and money of sending files to an external printer with up to 2 rolls of media and a printing speed of up to 6 A1 or D-size prints per minute. Scan while printing and copy while printing to work even more efficiently.



## Get great results the easy way

One look and everyone immediately knows how this system works. The Océ ClearConnect 10 inch touch screen works like a tablet so there is zero learning curve. The system is convenient too. Plots are neatly collated and stacked on the Top Delivery Tray at an ergonomic height. You don't have to wait around for prints. The Océ Delivery Tray stacks up to 150 sheets, up to 42 inches wide, ready when you are. Another practical time saver is one of the Océ online folder options, which generate quality folded documents automatically to keep your desk clean.

## Count on secure and durable printing

Like the entire award-winning Océ PlotWave family, these systems are made for the professional CAD environment. You get high quality black and white document sets that look great and stand up to intensive use on and off-site, thanks to our water fast prints and next evolution in print quality. It produces even better, more consistent quality documents. Copying and scanning results are superb as well, with less wrinkles and paper folds and easily readable colors. Operational costs are kept low with the hard working construction that outlasts many comparable systems. Critical components are completely enclosed to reduce wear and tear. Reinforced materials extend the system's lifetime and withstand intensive walk-up usage.

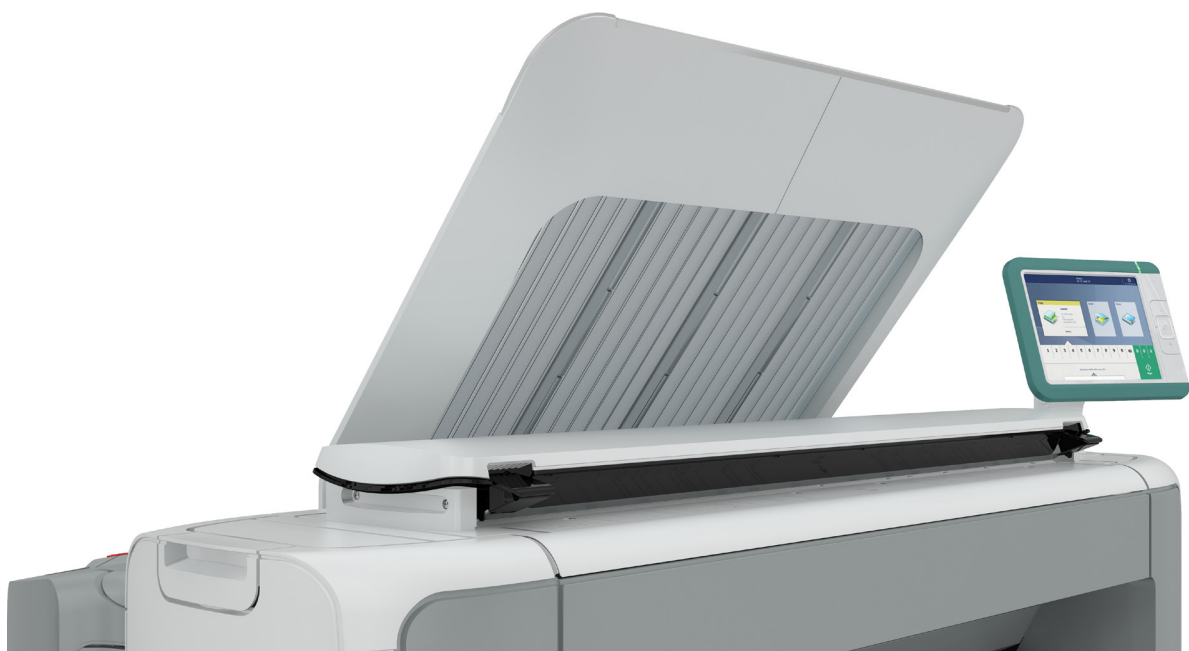
## Protect confidential information

This system features the latest FIPS 140-2 security features supported by a Windows 8 embedded platform and our POWERSync controller to protect your confidential information. The optionally access management functionality enables you to secure your valuable print data via LDAP login or Smart card security. The open interface of the POWERSync controller also enables the printer to fit smoothly into existing software, like ARC and UniFLOW, and hardware without worrying about operational or security issues.



## Be eco friendly

Designed to work side-by-side with people, the EPEAT compliant Océ PlotWave 345/365 systems are a people-friendly, planet-friendly choice. Thanks to the lowest ozone emissions, lowest levels of noise and heat compared to conventional systems. That means you can place this system in the corner of an office or anywhere else, knowing your people can work comfortably nearby. They also avoid spilling and inhaling toner with the closed toner system. The Océ PlotWave 345/365 is also compliant with the latest Energy Star 2 regulations.





- 1 Fast and easy with Océ ClearConnect panel**
- The Océ ClearConnect user panel works like a tablet.
  - Easily control the printer with your fingertips using the simple screen movements you are used to.
  - Swipe, spread and zoom in on details of a drawing.
  - Check that documents are correctly scanned using the live preview to avoid errors.

- 2 Neat document delivery**
- Get neatly collated and stacked documents of up to 50 A0 / E-size plots on the top delivery tray, thanks to air separation technology.
  - No extra space needed for a folding table.
  - Two folding options save you valuable time on hand folding documents.
  - Get quality folded documents ready to go.

- 3 Get better copy and color scanning results**
- Océ Image Logic\* automatically compensates for wrinkles and light colors to produce superior results.
  - Originals are inserted face-up and paper width is detected automatically.
  - Virtual unlimited scan templates standardize often used scan jobs within 1 touch.

- 4 Instant productivity with Océ Radiant Fusing**
- Get instant waiting free start-up and use half the energy of comparable systems.
  - With a remarkable print speed of up to 6 D/A1-size prints per minute.
  - Increase your productivity even more with the 2nd roll option for unattended printing.

- 5 Effortless roll changing**
- Up to two 36" media roll support.
  - Save time and effort thanks to the automated loading procedure.
  - Place the roll on the built-in roll loading station and paper is fed into the printer, cut and sized - completely automatically.

- 6 Reliable quality and performance**
- Take advantage of a superb print quality with high resolution Pico Printing at 600 x 1200 dpi.
  - Enjoy a long productive system lifetime thanks to robust and durable construction.
  - Extensive used areas of the printer are made of metal parts extending the life time even more.

- 7 Eco friendly system**
- This system has the lowest ozone emissions, lowest levels of noise and low levels of heat compared to conventional systems.
  - It runs very quietly, so it can be comfortably placed in an office environment
  - The toner system is completely closed and easy reachable.

- 8 Productive and secure POWERSync controller**
- Get the power to handle large and complex documents thanks to the productive POWERSync controller.
  - Scan while printing and copy while printing to work efficiently.
  - Protect confidential information with the latest security and protection features supported by a Windows 8 embedded platform.
  - The open interface of the POWERSync controller also enables the printer to embed software, like ARC and UniFLOW.

- 9 Flexible workflow**
- This system is designed to make it easier to prepare, produce and manage complex technical documents and sets of drawings.
  - Advanced tools make it easy to get documents where you need them, when you need them.